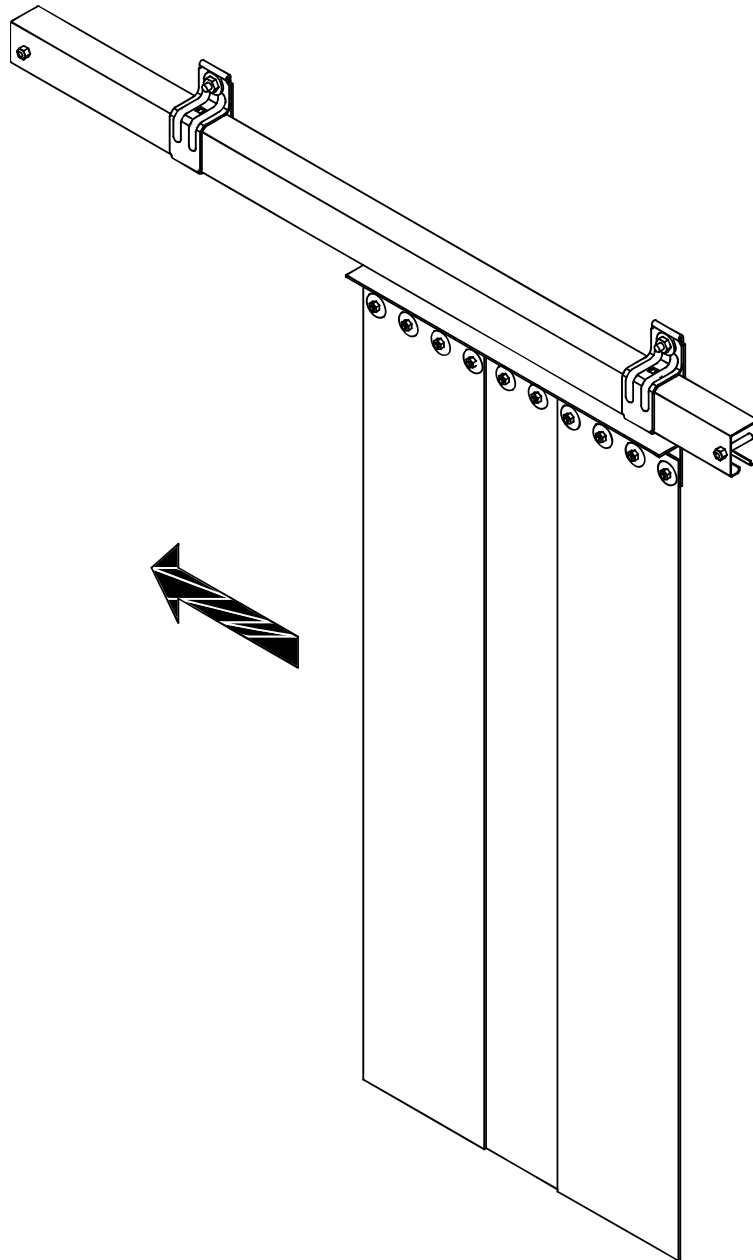


Series 9010-4 – Sliding Track Strip Curtain

INSTALLATION INSTRUCTIONS

READ ALL INSTRUCTIONS BEFORE INSTALLING CURTAIN. SUPER SEAL MFG. LTD. WILL NOT BE HELD RESPONSIBLE FOR IMPROPER INSTALLATION OF ANCHORING DEVICES, OR FOR INSTALLATION INTO AGED OR UNSOUND CONCRETE, CONCRETE BLOCK, OR OTHER WALL OR FLOOR MATERIAL WHICH MAY RESULT IN PREMATURE PRODUCT WEAR, PRODUCT FAILURE, PROPERTY DAMAGE, OR PERSONAL INJURY.



Note: Before Installation see hardware list at back of this manual (page 7).

1a. Mark Wall For Installation – For Bi-parting Slide Only

- Using a level, make a vertical line parallel to the doorjamb at a distance of half the opening door width from jamb. Repeat for other side (Fig. 1a).
- Using a level, make a horizontal line 3" above lintel and right across from one vertical line to another (Fig. 1a).
- Make a centre mark indicating the center of the door opening width (as shown) (Fig. 1a)

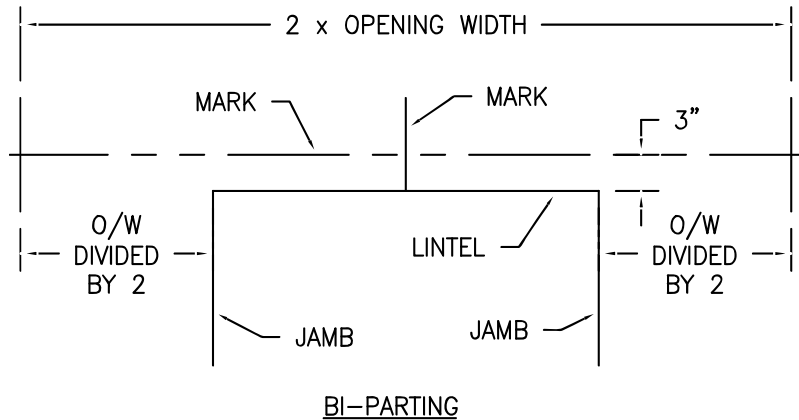


FIG. 1a

1b. Mark Wall For Installation – For Single Slide Only

- Determine whether curtain is sliding to left or right hand side, Fig. 1b shows a right side sliding curtain.
- Using a level, make a vertical line parallel to doorjamb at a distance of 2 1/2" from jamb of opposite side of slide, i.e. if slide is in left direction, make mark 2 1/2" out from right side jamb (Fig. 1b).
- Using a level, make another vertical line parallel to doorjamb and at a distance of twice the door opening width from the first mark (Fig. 1b).
- Using a level, make a horizontal line 3" above lintel and right across from one vertical line to another (Fig. 1b).

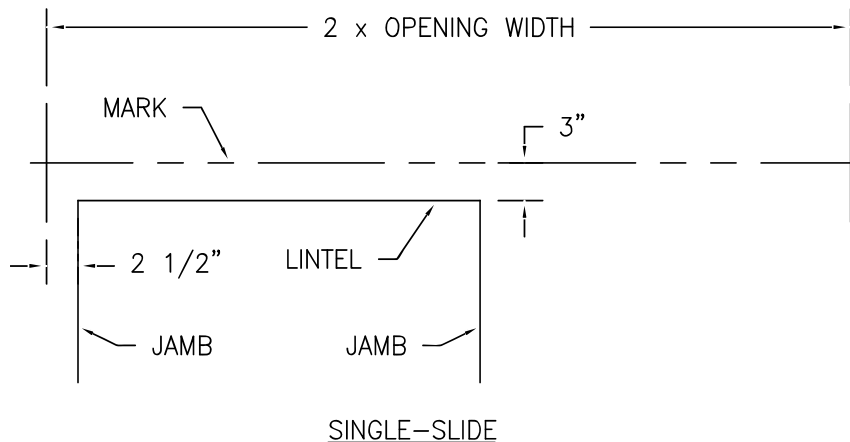
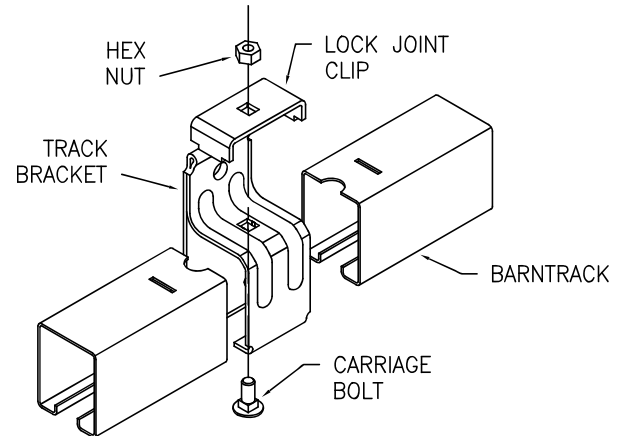
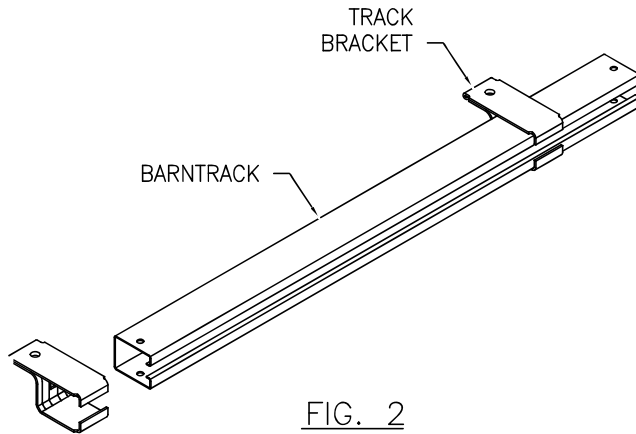


FIG. 1b

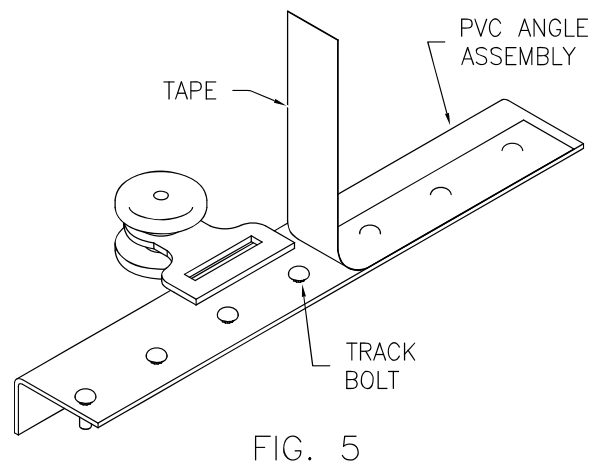
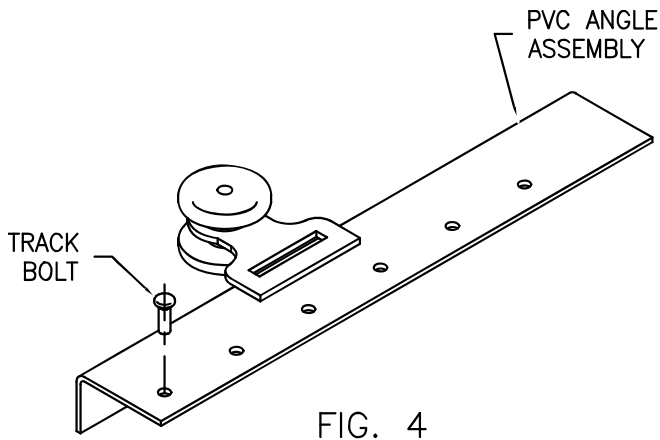
2. Prepare Barn Track

- a. Slide appropriate track brackets over barn track (Fig. 2).
- b. Use Joint connectors where necessary
 - I. Put factory edges together with barn track inserted into track bracket (Fig. 3).
 - II. Insert lock joint clip into slots on barn track ends (Fig. 3).
 - III. Insert carriage bolt up from underneath through square hole (Fig. 3).
 - IV. Fasten with hex nut on top using ½" Socket Driver Bit (Fig. 3).



3. Prepare Sliding PVC Angle

- a. Insert track bolts into PVC angle (Fig. 4).
- b. Tape back side of PVC angle to hold track bolts in place (Fig. 5).



4. Slide PVC Angle Into Barn Track

- o Slide PVC angle into barn track with track bolts pointing towards the front (Fig. 6).

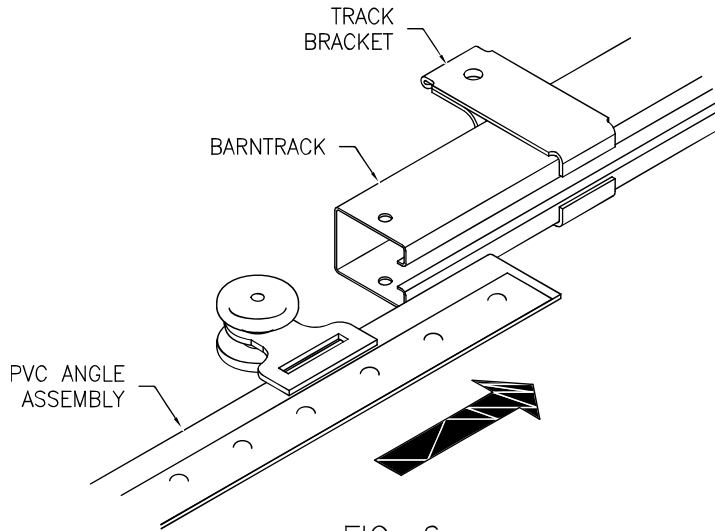


FIG. 6

5. Close Barn Track Ends

- o Insert 5/16" x 2 1/4" hex bolts into holes at end of barn track (Fig. 7).

NOTE: Insert bolt from back side of barn track.

- Tighten with 5/16" hex bolt using 1/2" Socket Driver Bit.
- Repeat for other side (Fig. 7).

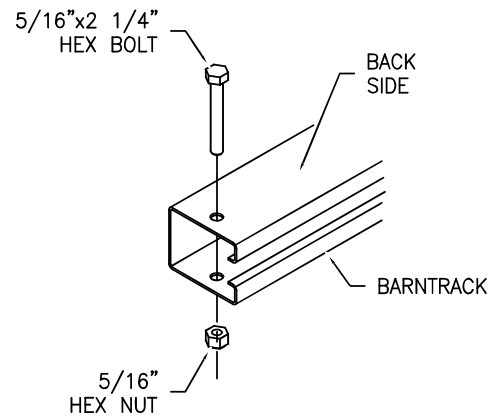
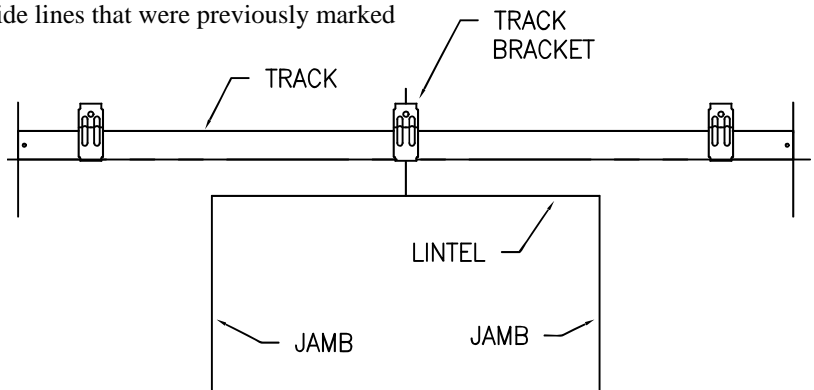


FIG. 7

6. Attach Track Assembly To Wall

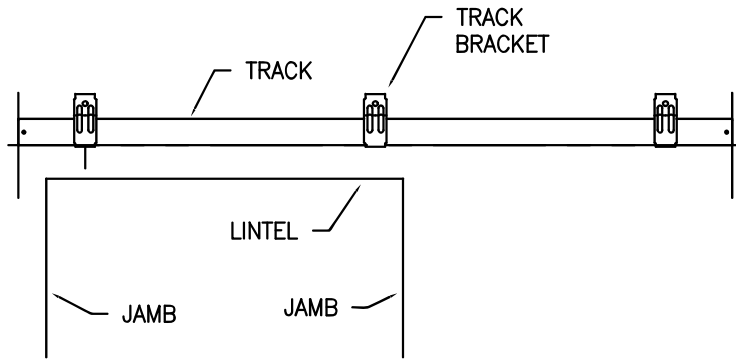
- o Place track assembly against wall, using guide lines that were previously marked

Note: For Bi-Parting strip curtain see Fig. 8a
For Single Slide curtain see Fig. 8b



BI-PARTING

FIG. 8a



SINGLE-SLIDE

FIG. 8b

- a. Ensure that bottom edge of barn track is flush with horizontal line (3" above lintel) and that barn track ends are lined up with vertical lines.
- b. Drill through mounting holes in track bracket, use $\text{\O} 3/8$ " masonry drill bit (Fig. 9).
- c. Insert $3/8$ " sleeve anchors and tighten with $1/2$ " socket wrench (Fig. 9).

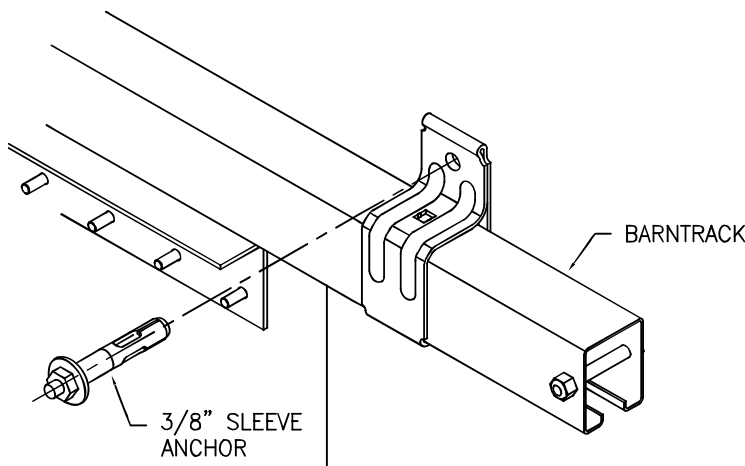


FIG. 9

$1/4$ " FENDER
WASHER &
 $1/4$ " HEX NUT

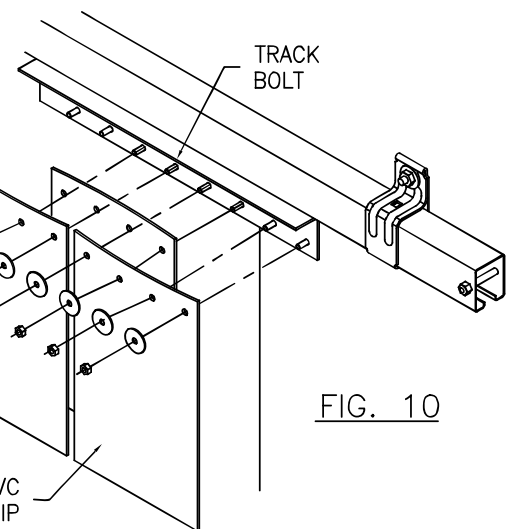
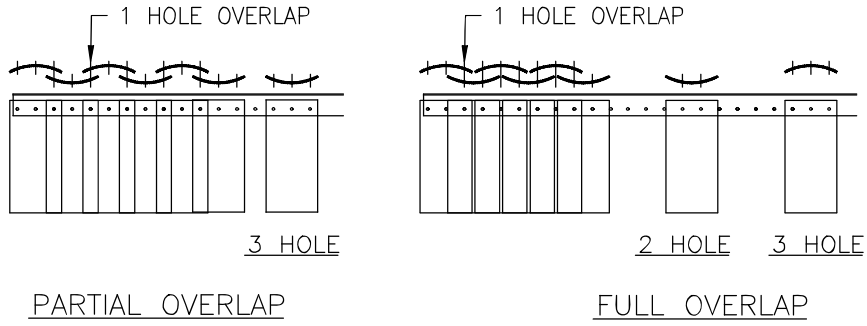


FIG. 10

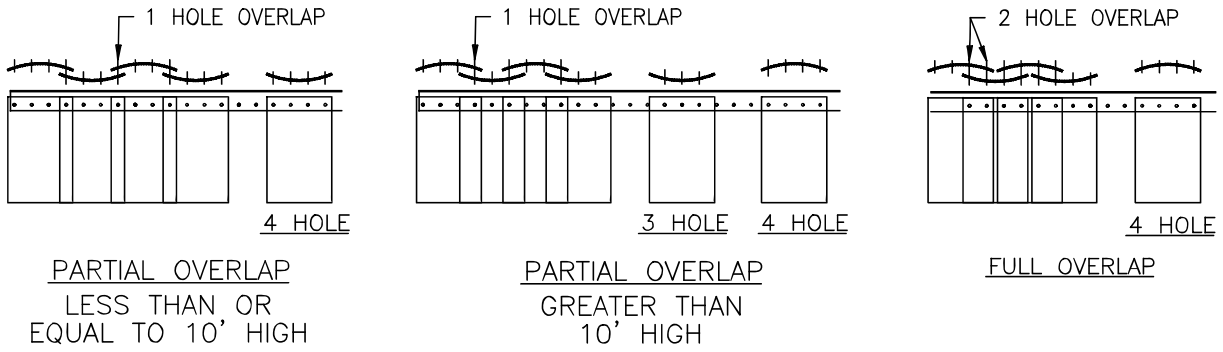
7. Attach PVC Strips

- a. Attach side PVC strips to sliding PVC angle track (Fig. 10).
- b. Secure PVC strips into position using $1/4$ " fender washers and $1/4$ " hex nuts. Use $7/16$ " Socket Driver Bit (Fig. 10).

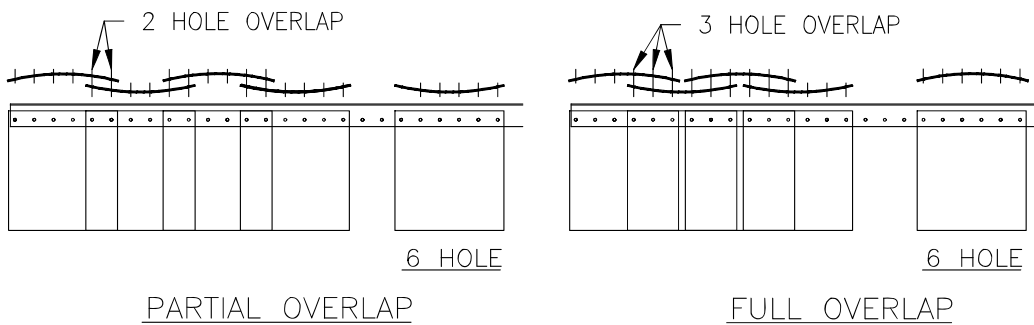
Note: Refer to Figs. A-D for proper PVC strip layout.



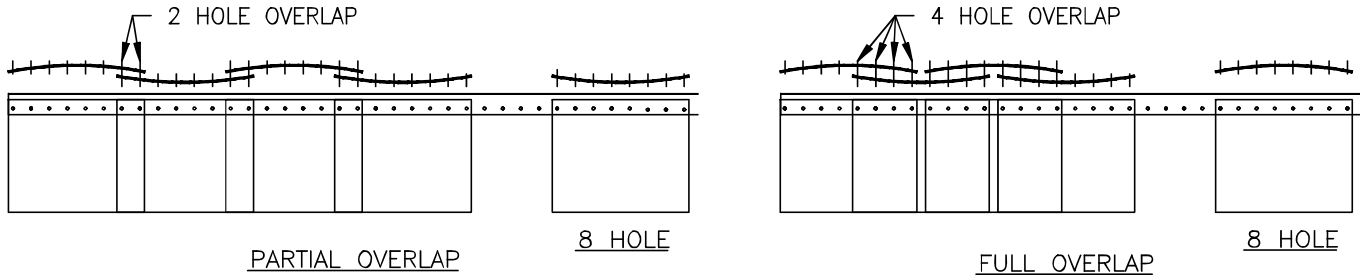
6" STRIPS
FIG. A



8" STRIPS
FIG. B



12" STRIPS
FIG. C



16" STRIPS

FIG. D

The Following Lists Cover Basic Installation, Not Including Options.

Components List (Per Assembly)

No.	Description	Qty.
1	PVC Angle	*
2	Barn Track	*
3	PVC Strips	*

*Quantities dependent on customer specifications

Hardware List (Per Assembly)

No.	Description	Qty.
1	1/4" (20) Hex Nut-Zinc	*
2	1/4" B.S. Fender Washer-Zinc	*
3	1/4" (20) X3/4" Track Bolt-Zinc	*
4	5/16" (18) Locknut-Zinc	*
5	5/16" (18) X2 1/4" Hex Bolt-Zinc	*
6	#021 Single Carrier	*
7	1X31 Track Bracket	*
8	1X31 Lock Joint Clip (If joint is required)	*
9	3/8" X1 7/8" Sleeve Anchor-Zinc	*

*Quantities dependent on customer specifications

Recommended Tools

No.	Description	Qty.
1	Tape Measure	1
2	Plumb line or Level	1
3	Pencil or Marker	1
4	Square	1
5	Power Drill	1
6	Hammer Drill	1
7	3/8" Masonry Drill Bit	1
8	1/2" Socket Driver Bit	1
9	7/16" Socket Driver Bit	1